

NATIONAL CAPITAL PUPPETRY GUILD



Make a Pollinator Puppet!

Skills: Cutting with scissors, cutting a 3-D shape, using masking tape, folding, twisting

Materials:

Non-recyclable items I found: candy egg container, tissue paper, twist ties



Items I purchased: masking tape, markers, pipe cleaners (optional)

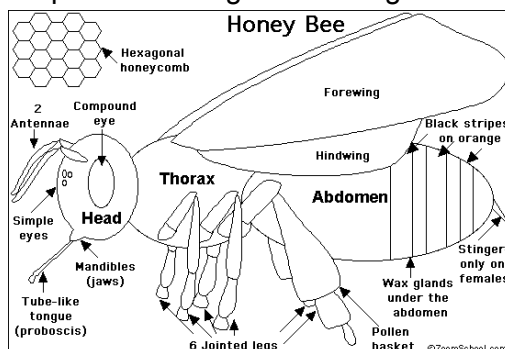
Item I had on hand: landscape painting. Pictures from magazines work well too! I also like to paint the lid to pizza boxes as well.

Time: This took me about an hour

Mess level: moderate. I had to clean up some cuttings and I did get marker on my hands

Parts of my puppet:

- Head
- Thorax
- Abdomen
- Antennae
- Wings
- Legs



Prep: I cut masking tape into pieces before I started. I did cut them smaller as I went on, but this was a good start for me.



Getting started:

I thought about simple shapes and looked at the materials I had. I decided which shapes could make different parts of the bee.

Head - cut down egg shape to small oval/football shape. My egg shapes also had a circular bump that I positioned to make eyes.

Thorax - egg shape cut to a spherical shape.

Abdomen - egg shape at its largest with extra cut off the head shapes

Antennae and armature - twist tie

Wings - clear egg candy container cover

Legs - twist ties

Building the bee:

I cut the egg shapes to sizes.



I used a twist tie as an armature to attach all the parts to, starting with the antenna.





I taped the head to the armature.



I wrapped the legs to the armature and then taped the thorax to the armature.



I drew the wings on the top of the candy egg container and cut them out with scissors. I slide the scissors forward to start the next cuts so I don't have sharp edges. I used an existing bend in the lid to help my wings stand up.



I taped the wings to the back of the thorax.





I assembled my abdomen pieces.

I wrapped the armature around the abdomen for extra stability.



I covered the head, thorax, and abdomen with tape so I could color on them.



I curled the antennae over a pencil.

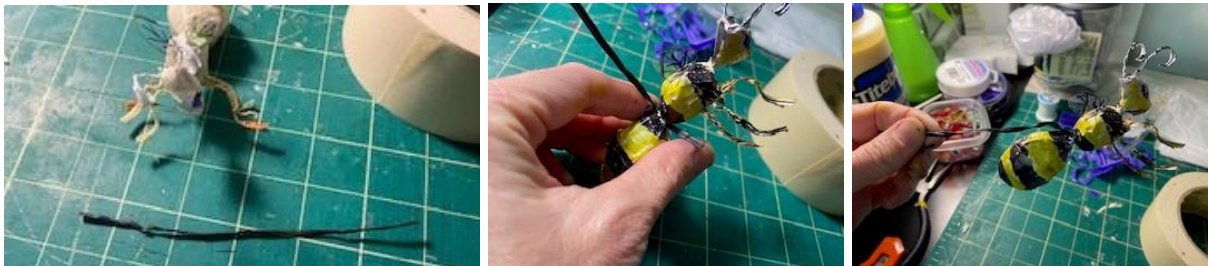




I colored the puppet with markers.



I used a large twist tie as a control rod for the puppet.



I made a flower for the puppet to pollinate.

I used tissue paper from a gift, a twist tie, and an empty spool of thread.

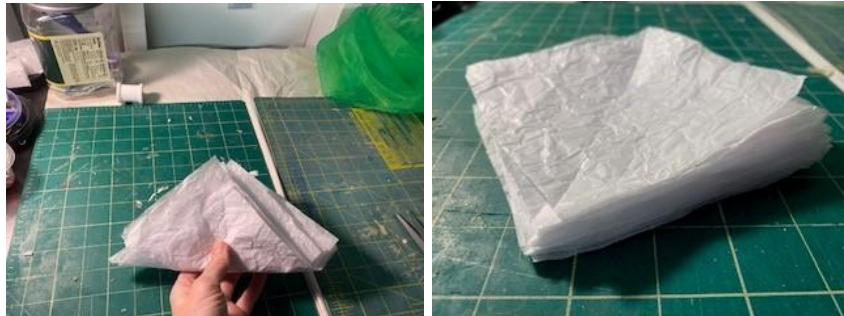




I cut the tissue paper in half until I had about 8 smaller sheets.



I folded the stack of tissue paper into a triangular shape so I could trim it to a square shape.



I folded the stack of tissue paper into a fan shape.





I wrapped the twist tie around the center of the folded shape.



I lifted each layer of tissue paper up to create the flower shape.



I stood the flower up using the empty spool of thread as a base.





I created a scene for my puppet with the flower and the picture.



NICE!

